

Airplane Noise Issue impacting Cupertino and Sunnyvale

By residents

<http://savemysunnysky.org>

Jan 21, 2017

This Doc: <https://goo.gl/zlwFdt>



Who Are We?

- **Save My Sunny Sky Google Group:**
 - <http://group.savemysunnysky.org>
 - 197 Members (Increasing every single day)
- **Save My Sunny Sky WeChat Group:**
 - <http://wechat.savemysunnysky.org>
 - 386 Members (Increasing every single day)
- **Neighborhood Groups on Airplane Noise:**
 - Nimitz, Cherry Chase, Cumberland, Ponderosa, Homestead High, Ortega Park, Serra Park, Bernardo & Iowa, Rancho, Golden Gate, Cherry Hill, Asian Community, Israeli Community ...

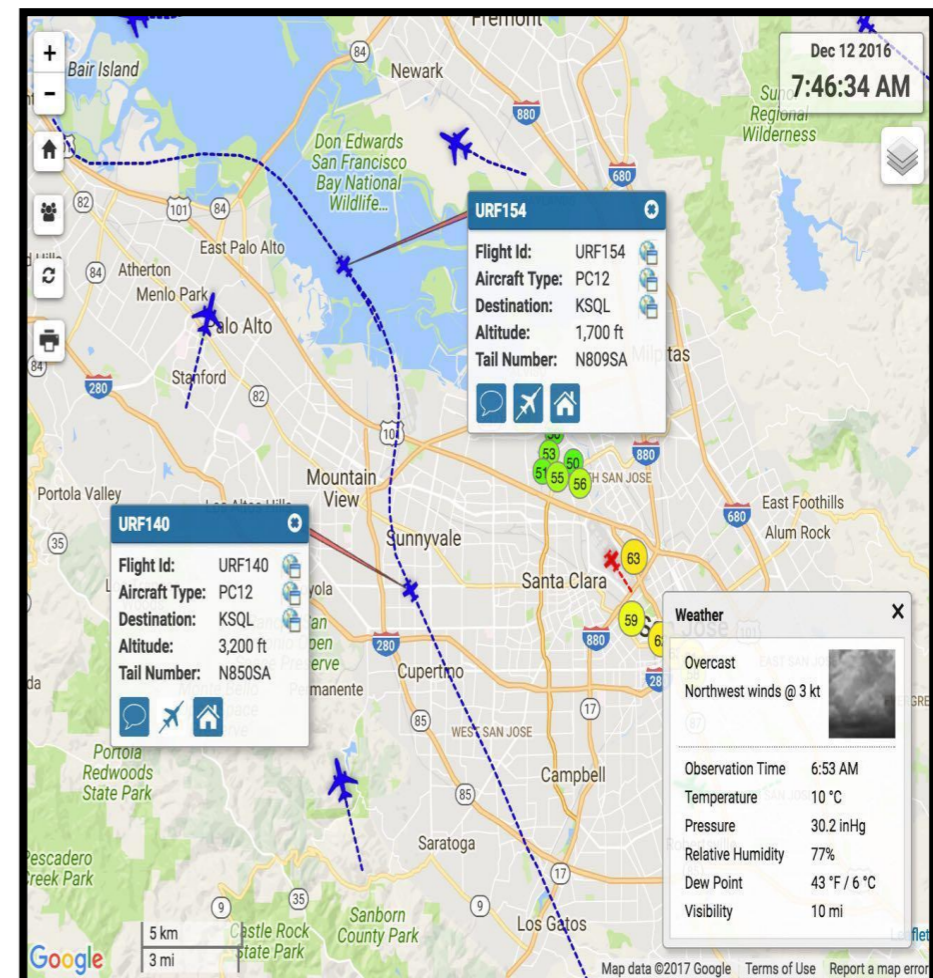


Existing Noise Issues

- SQL (San Carlos Airport)
 - Rerouted over North Sunnyvale **without notifying** the city or the residents.
 - 6-month trial ended 1/4/2017, meeting scheduled in Feb to decide
 - Surf Air is still expanding rapidly
- SJC (San Jose International Airport)
 - South flow brings 200+ low flying airplanes over Sunnyvale every day
 - Very concentrated flight path with increased frequency
 - Unbearable noise level for residents
- SFO (San Francisco International Airport)
 - Increased to ~15 daily flights overs Sunnyvale
 - Potentially more vectored flights over Sunnyvale due to recent FAA proposal of Class-B airspace modifications

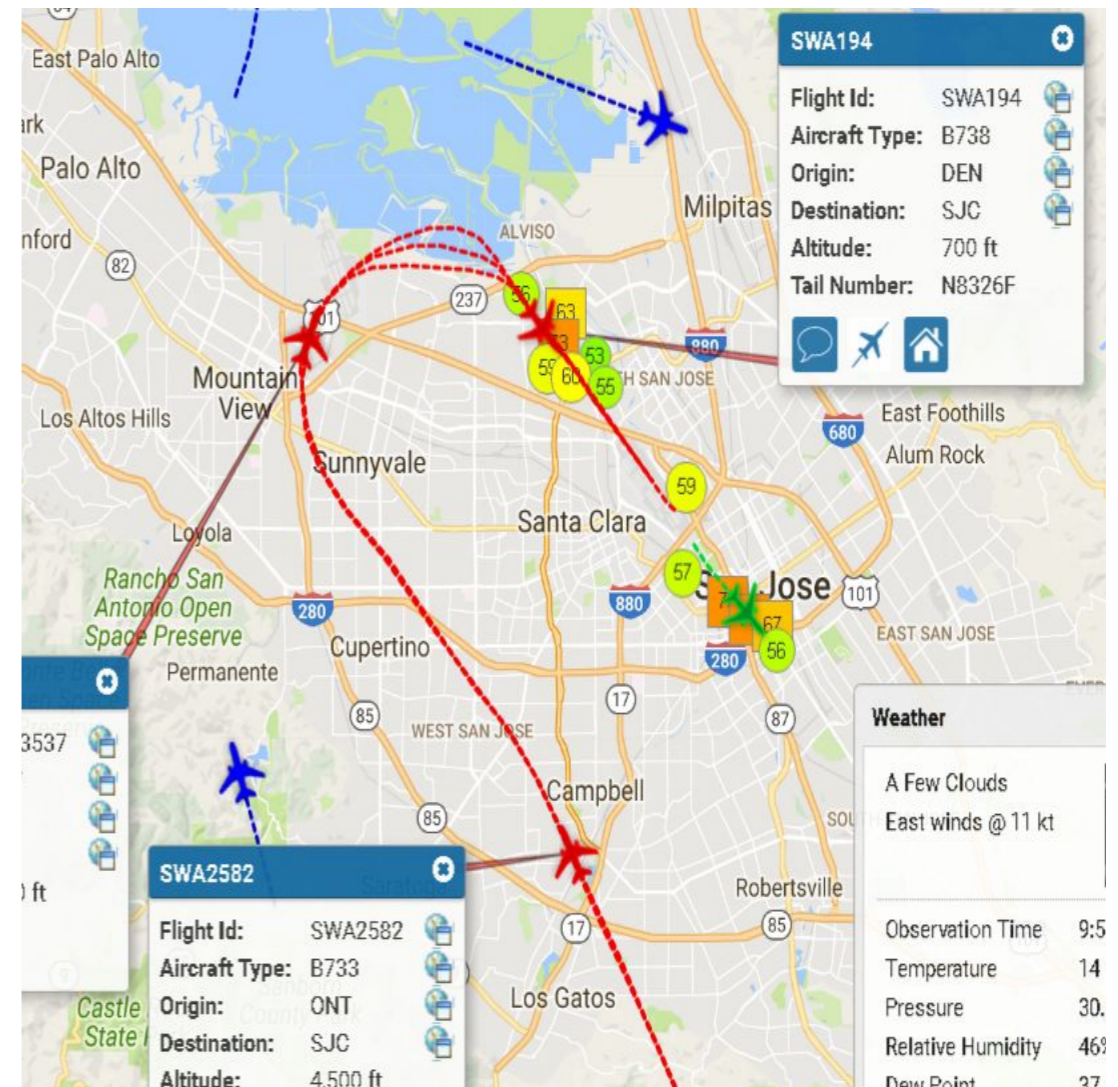
Surf Air: Overview

- Surf Air started flying into San Carlos airport in 2013 and has grown to 22 flights per day and increasing rapidly.
- Surf Air uses a Pilatus PC-12 propeller plane that generates noise levels that are **disruptive** to surrounding neighborhoods.
- On July 4, 2016 a six month Bayside Visual Approach trial was started at the request of San Mateo County and Surf Air due to noise complaints. The cities of Sunnyvale and Cupertino were **not notified** nor consulted.



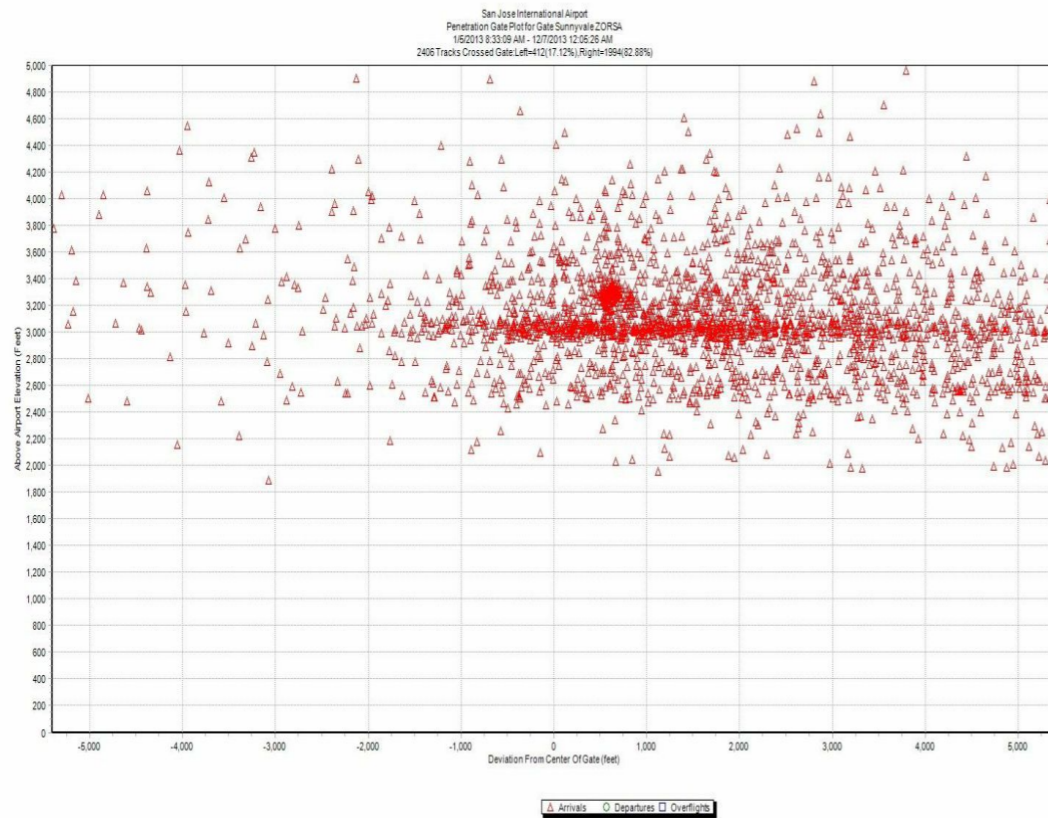
SJC: Overview

- SJC arrival flights have always flown over Sunnyvale during South Flow. Why is there so much more noise?
 - Increase in Concentration
 - Decrease in Altitude
 - Potential Increase in use of air brakes, engine thrust and flaps causing planes to fly “dirty” possibly caused by:
 - Steeper descent and faster speeds over Sunnyvale
 - Tight U turn over Sunnyvale
 - Increase in total SJC Flight Operations
 - 14% increase during the last year (2015 compared to 2016)

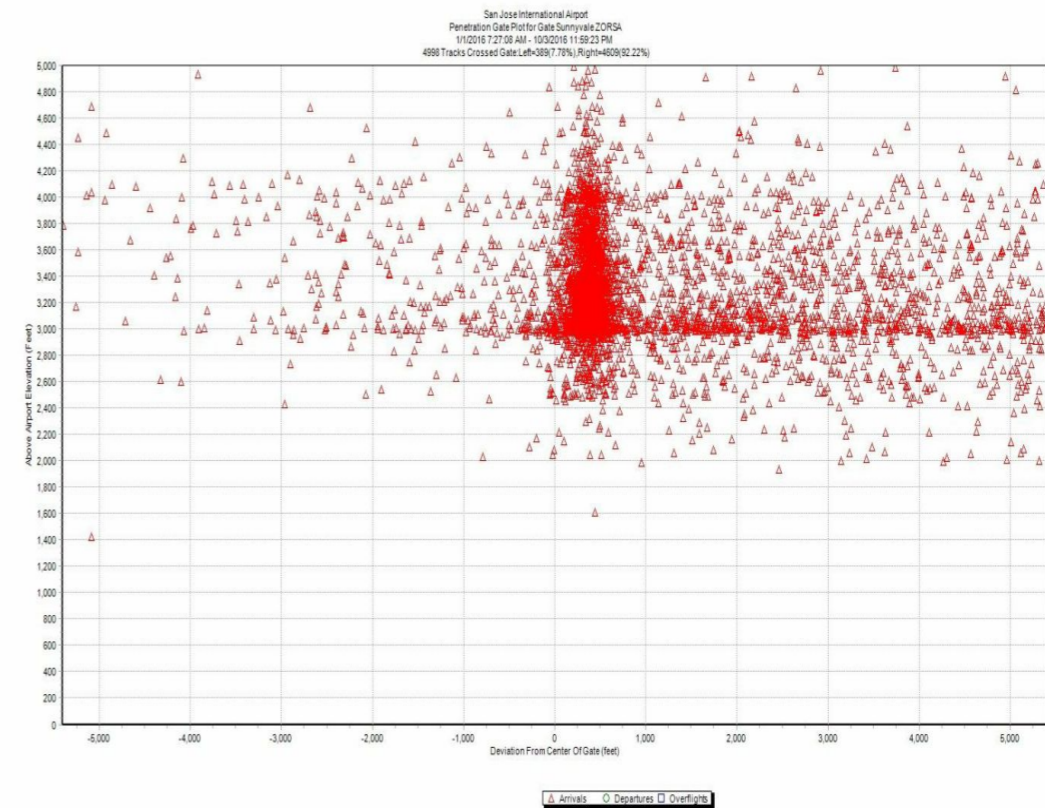


SJC – Increased Concentration

SJC Flight Distribution Over Sunnyvale – 2013



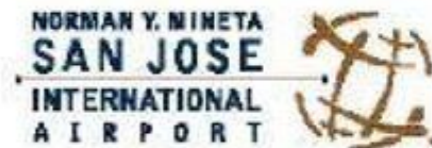
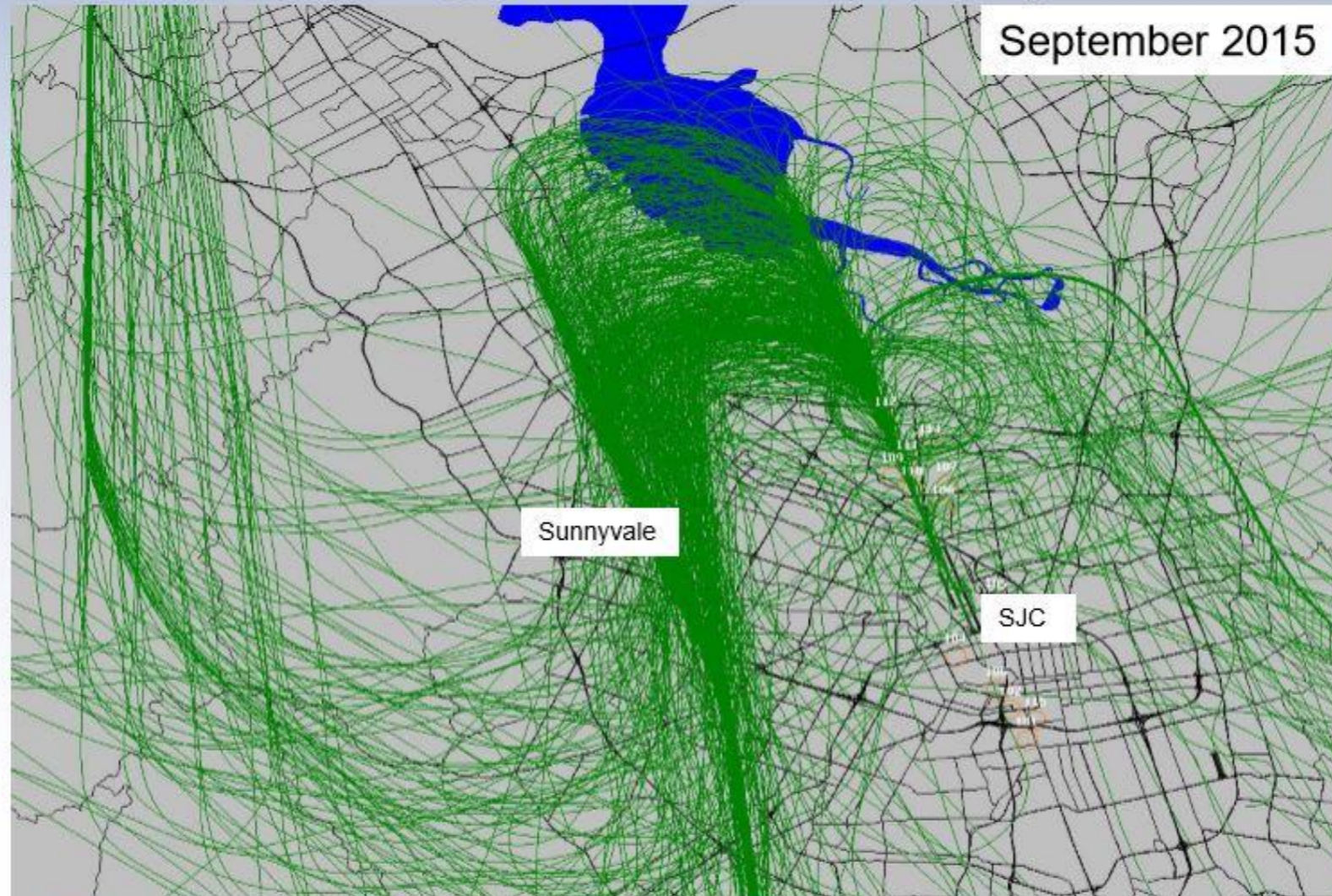
SJC Flight Distribution Over Sunnyvale – 2016 (increased concentration)



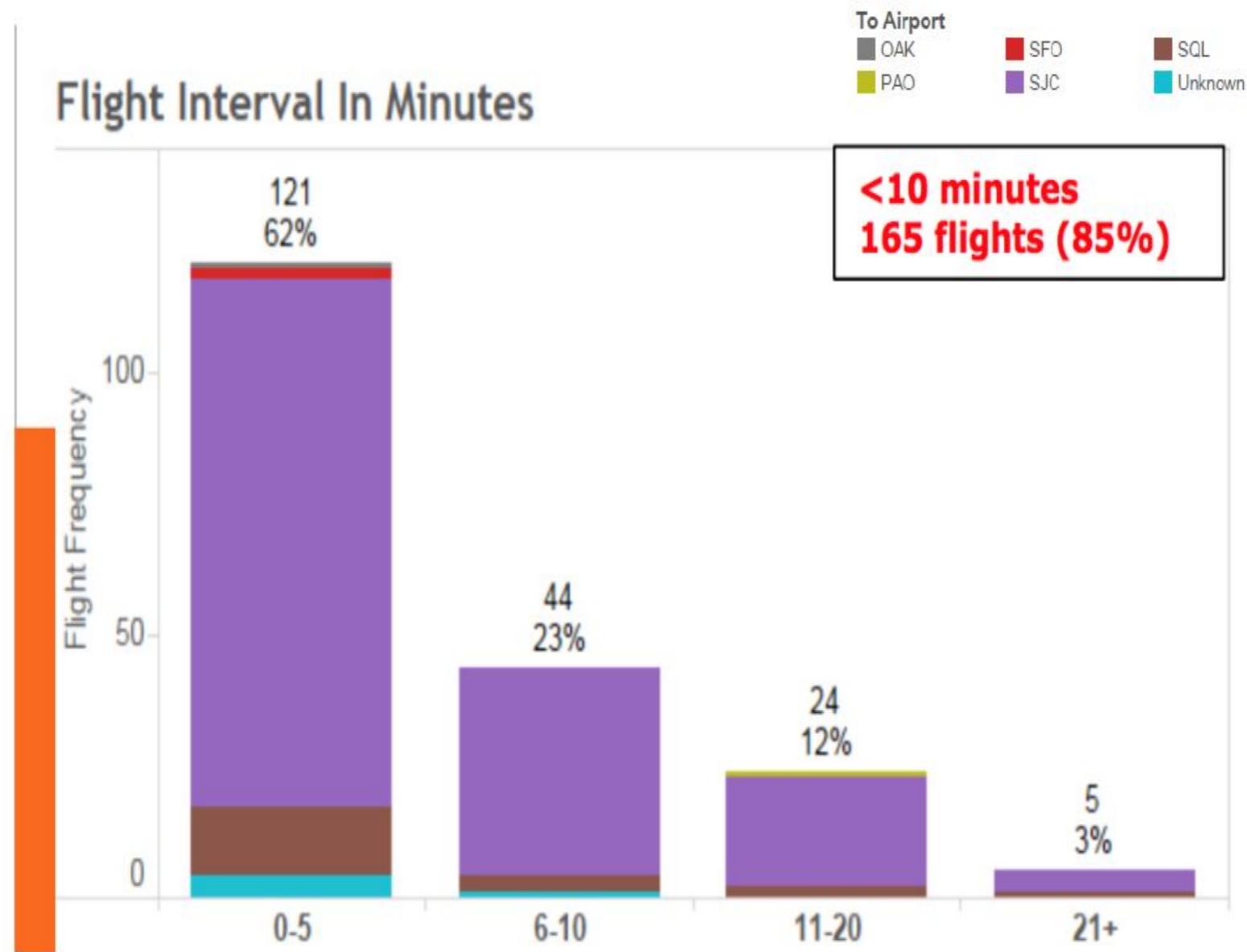
Distribution of flights in feet from Waypoint Zorsa.
Data spans 5000 feet (1 mile) from center point.

South Flow Path into SJC

South Flow Flight Tracks Over Sunnyvale - 2015



SJC – Increase in Flight Frequency

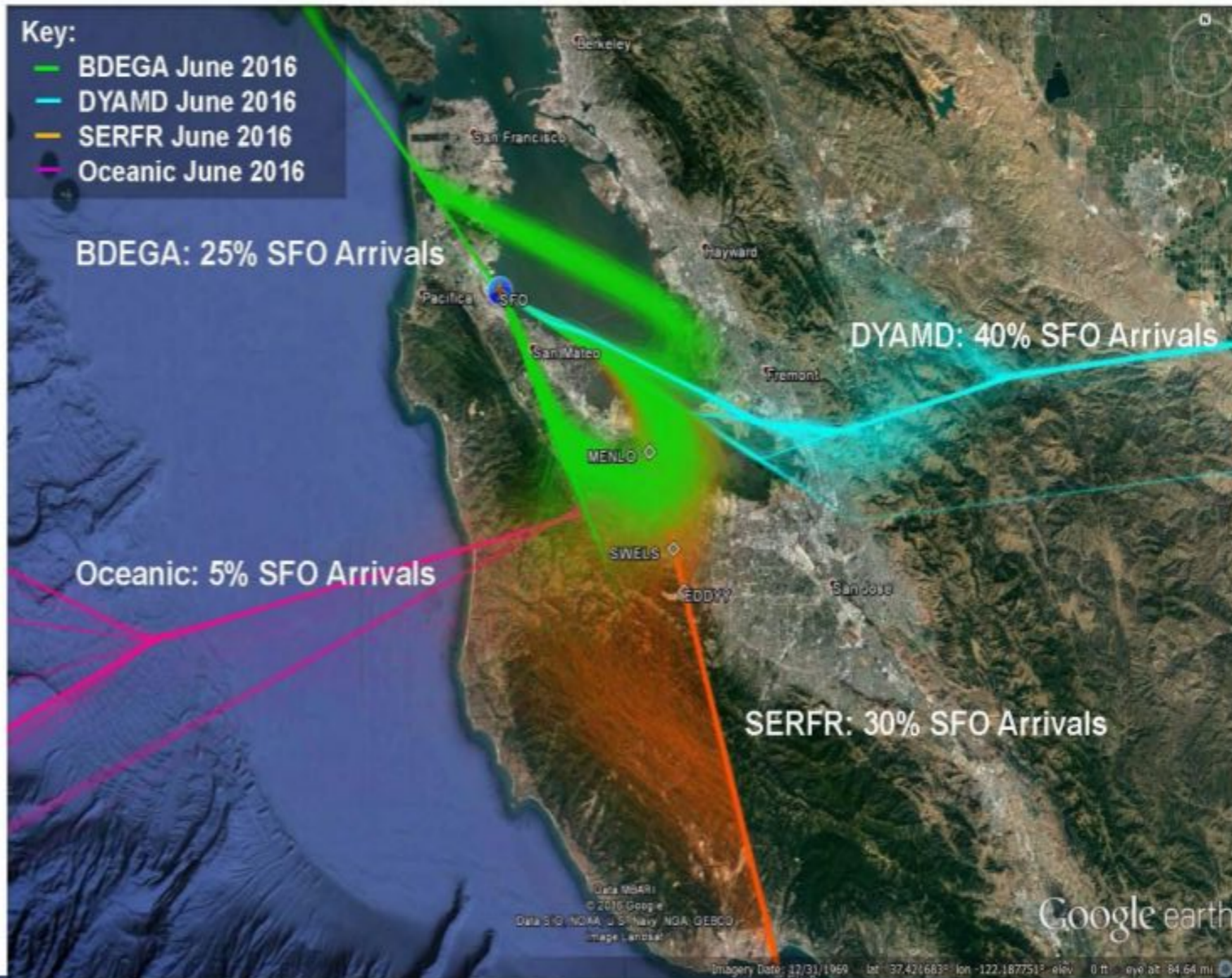


*Data provided by Sunnyvale resident for flights over their house on 1/3/17

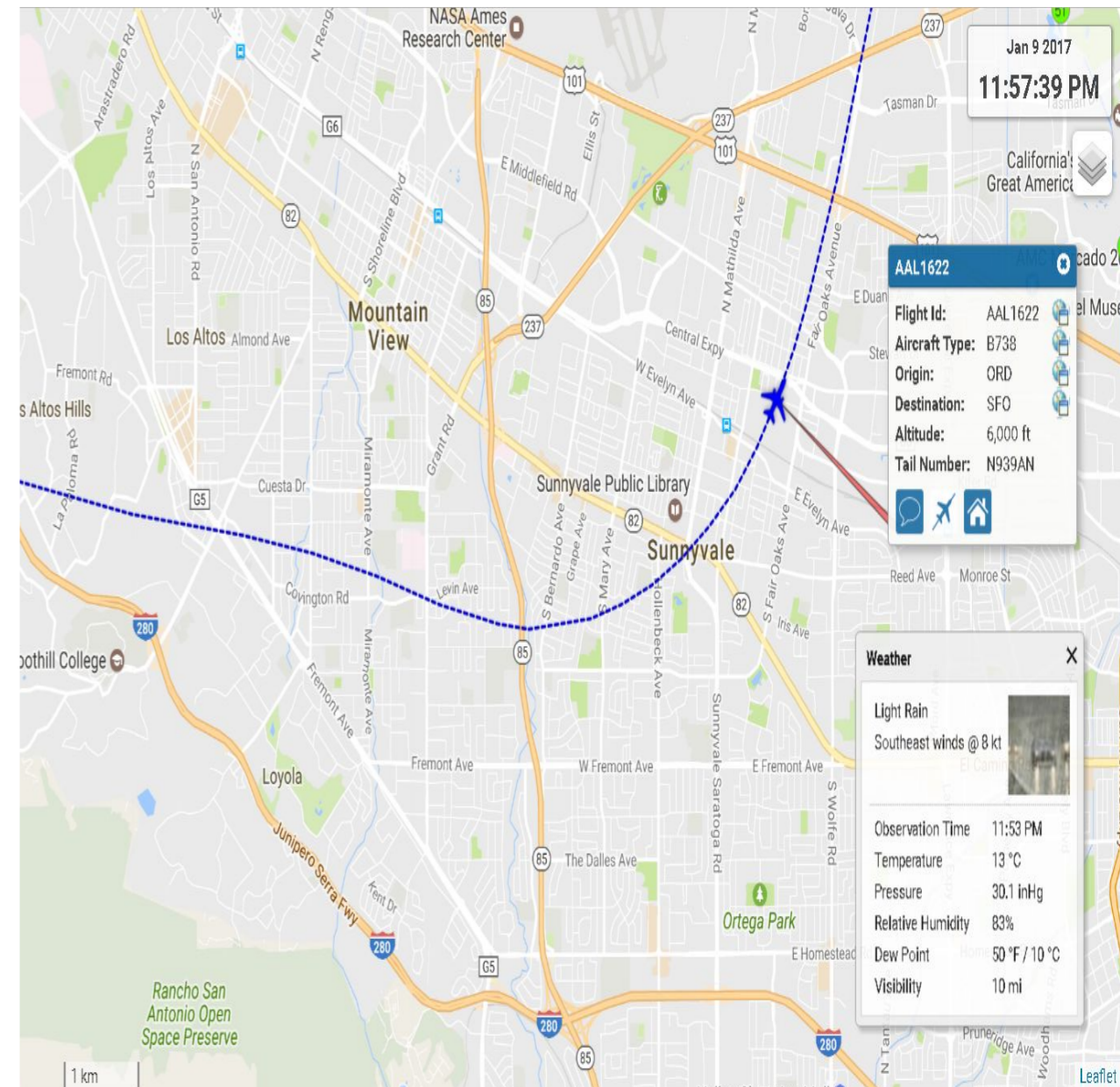
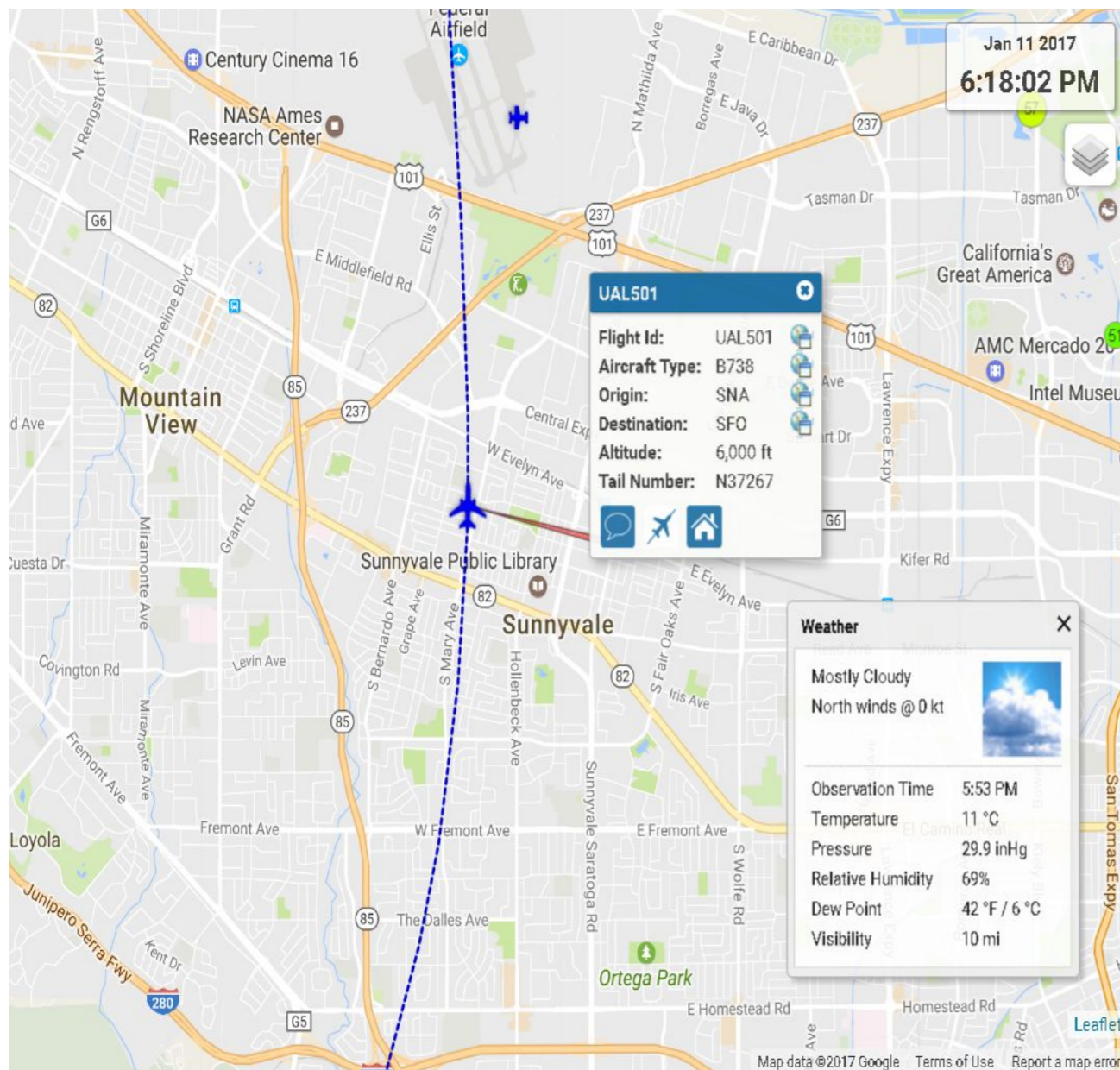
Emerging Noise Issues

- SFO
 - Vectored flights over Sunnyvale and Cupertino since late 2016
 - These SFO flights will force existing SJC airplanes to fly even lower
 - SFO does not have night curfew
 - Recent FAA proposal of Class-B airspace modifications

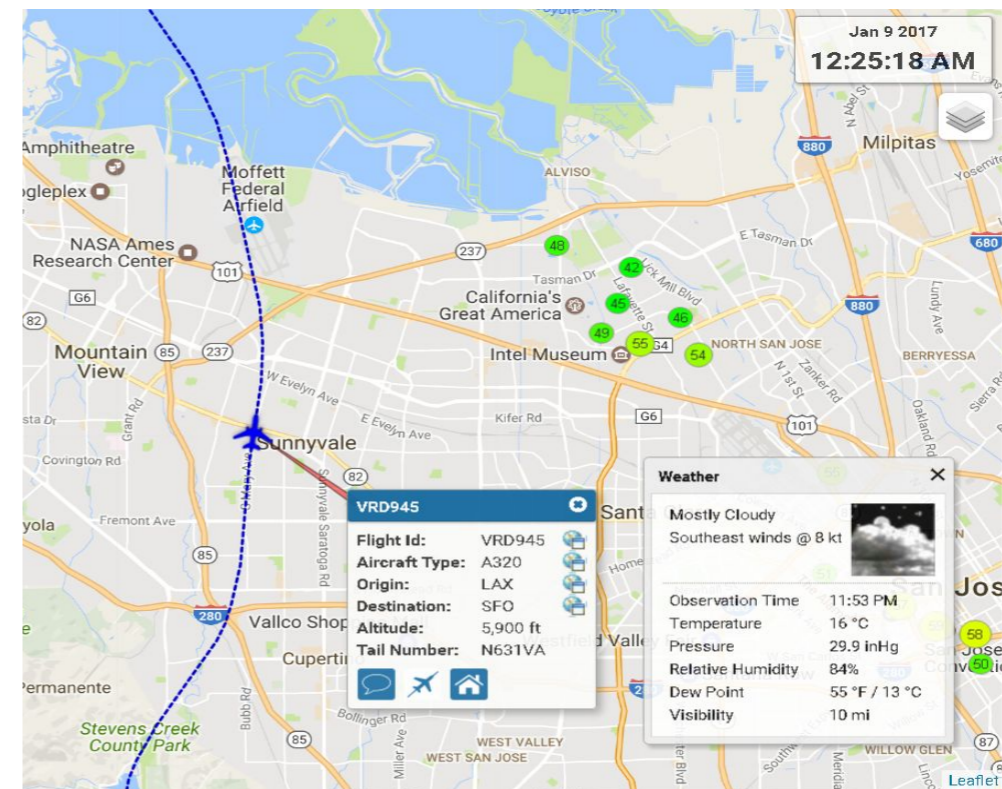
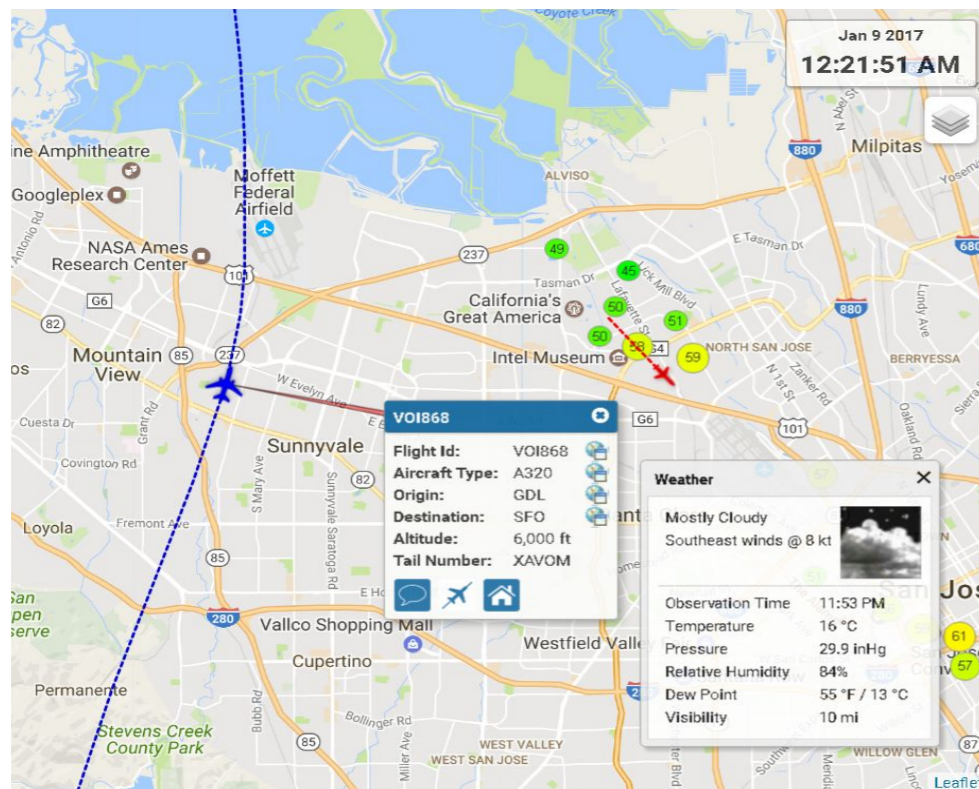
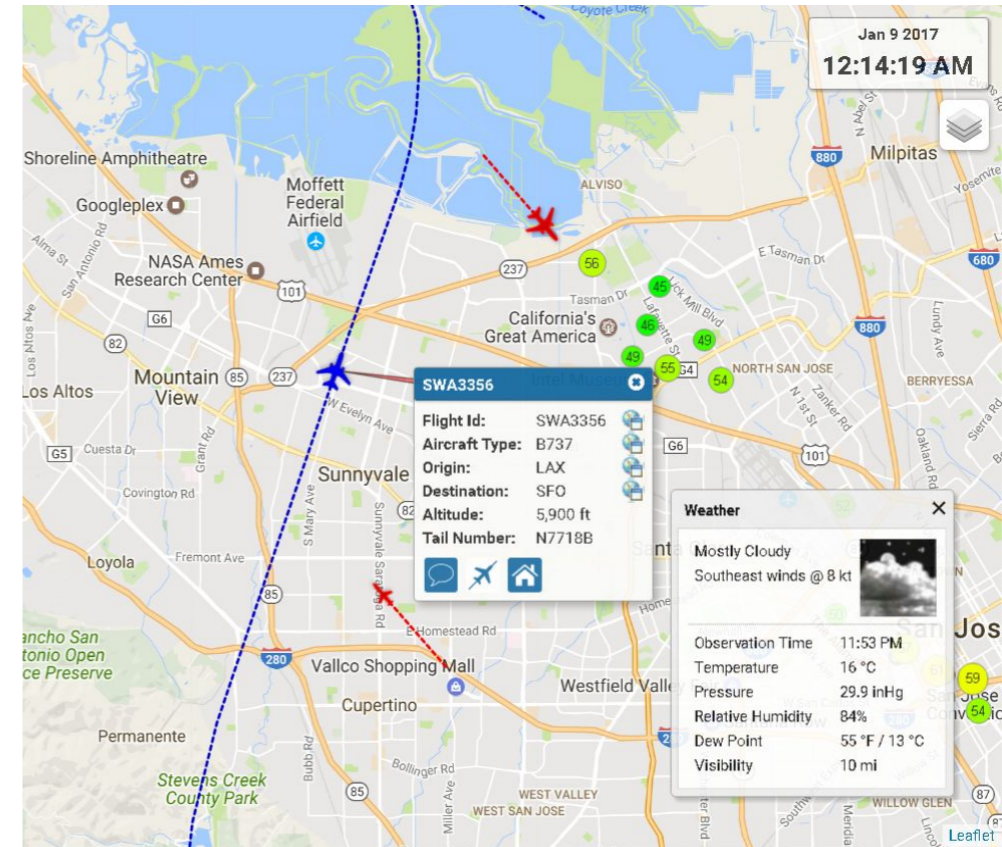
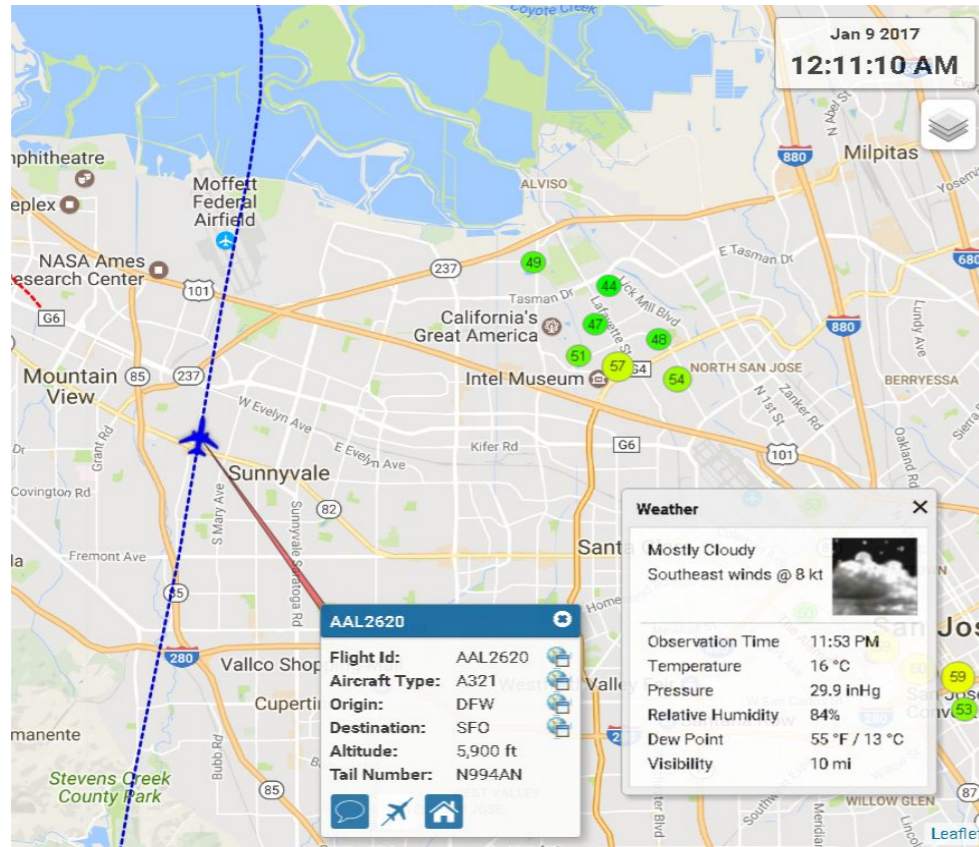
Arrivals into SFO



SFO Arriving planes flying over Sunnyvale Approx 6000FT



4 SFO arriving flights – Late night within a 14 minute period over Sunnyvale



SFO Class B Airspace Meeting 1/31@San Jose

- FAA has proposed modifications to “Class B Airspace Area” at SFO. The proposal would realign the airspace to provide more room for **vectoring**.
- **Tuesday, January 31 at 5:30 p.m.**
Dr. Martin Luther King, Jr. Library, Room 225
150 E. San Fernando St., San Jose, CA 95112

What can we all do?

- Broadcast the airport noise issues to our neighborhoods and bring more community awareness of the increasing airplane noise issues.
- Seek support and collaboration from community leads and elected officials in urging FAA to find a regional solution of airplane noise issues instead of shifting them from one community to another.
- Request representation of the impacted Sunnyvale communities in any ongoing and future FAA discussions and SFO roundtable discussion.

Thank You!



<http://savemysunnysky.org>

Home - Save My Sunny Sky

How to File Complain	Announcements	Truth and Discovery	FaceBook Us	WeChat Group
News	Residents In Action	Join Us (GoogleGroup)	Tweet Us	

Mobile Accesses

QR Code for [SaveMySunnySky](#)



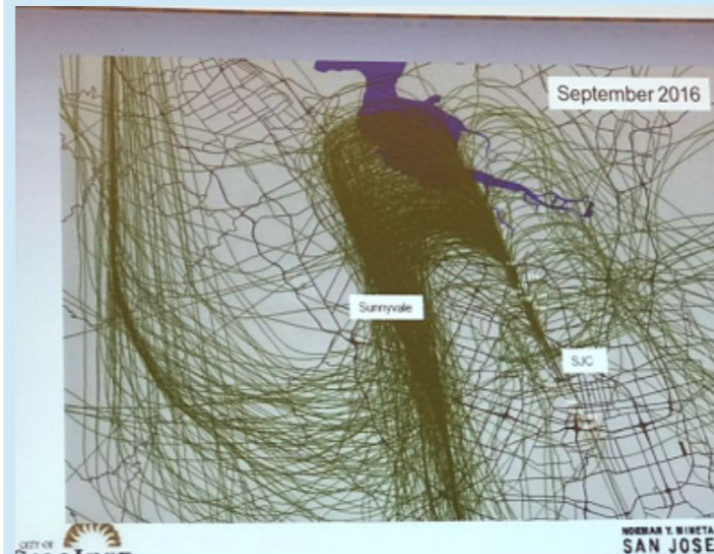
QR Code for [Google Group](#)



What Is Going On Over Our Heads Why It's So Polluted by Noise?

Starting from the second half of the year 2016, lots of residents from Sunnyvale and Cupertino noticed that in the sky

There Are More Air Crafts



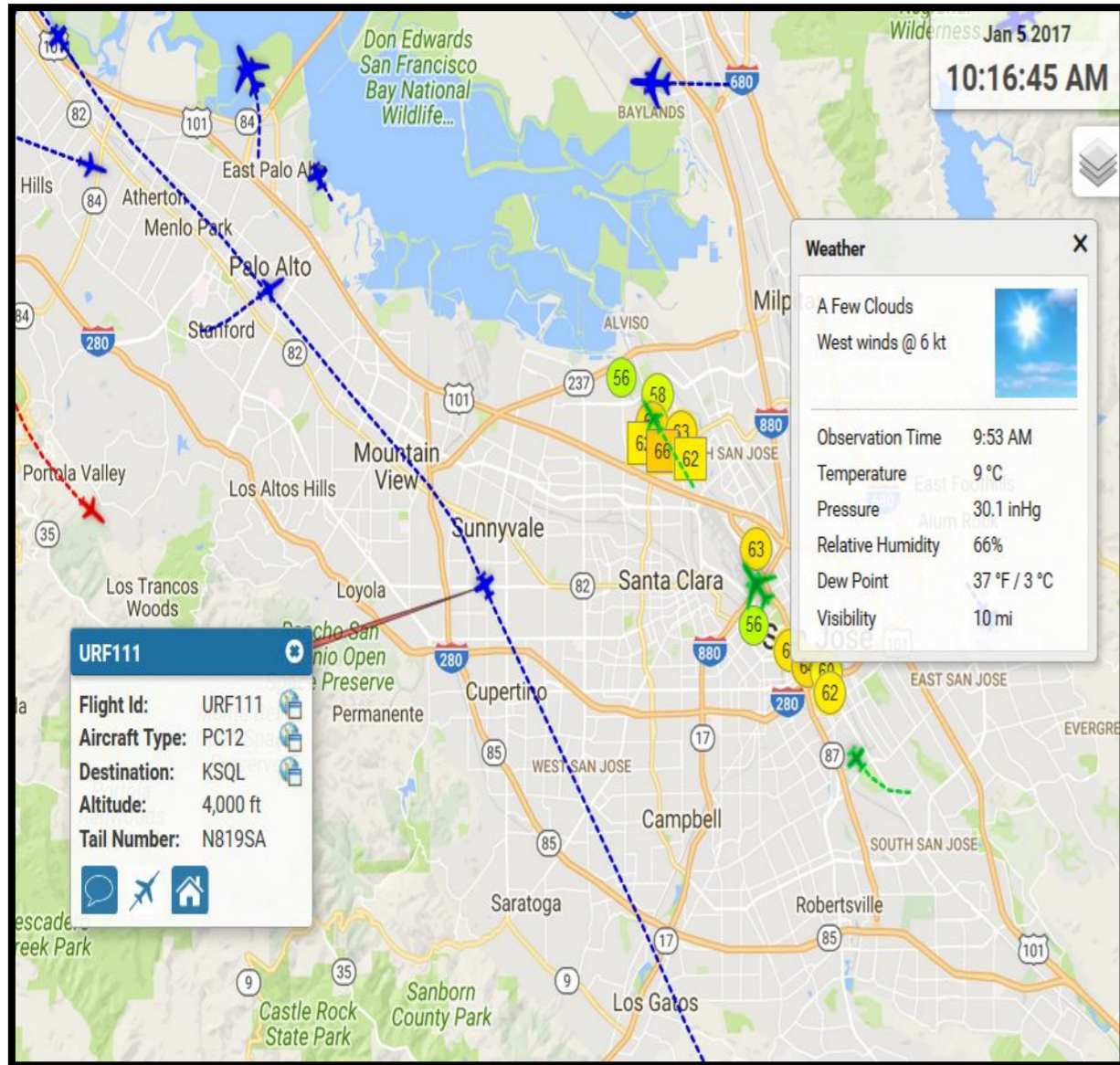
And They Are Flying in More Concentrated Patterns



Backup

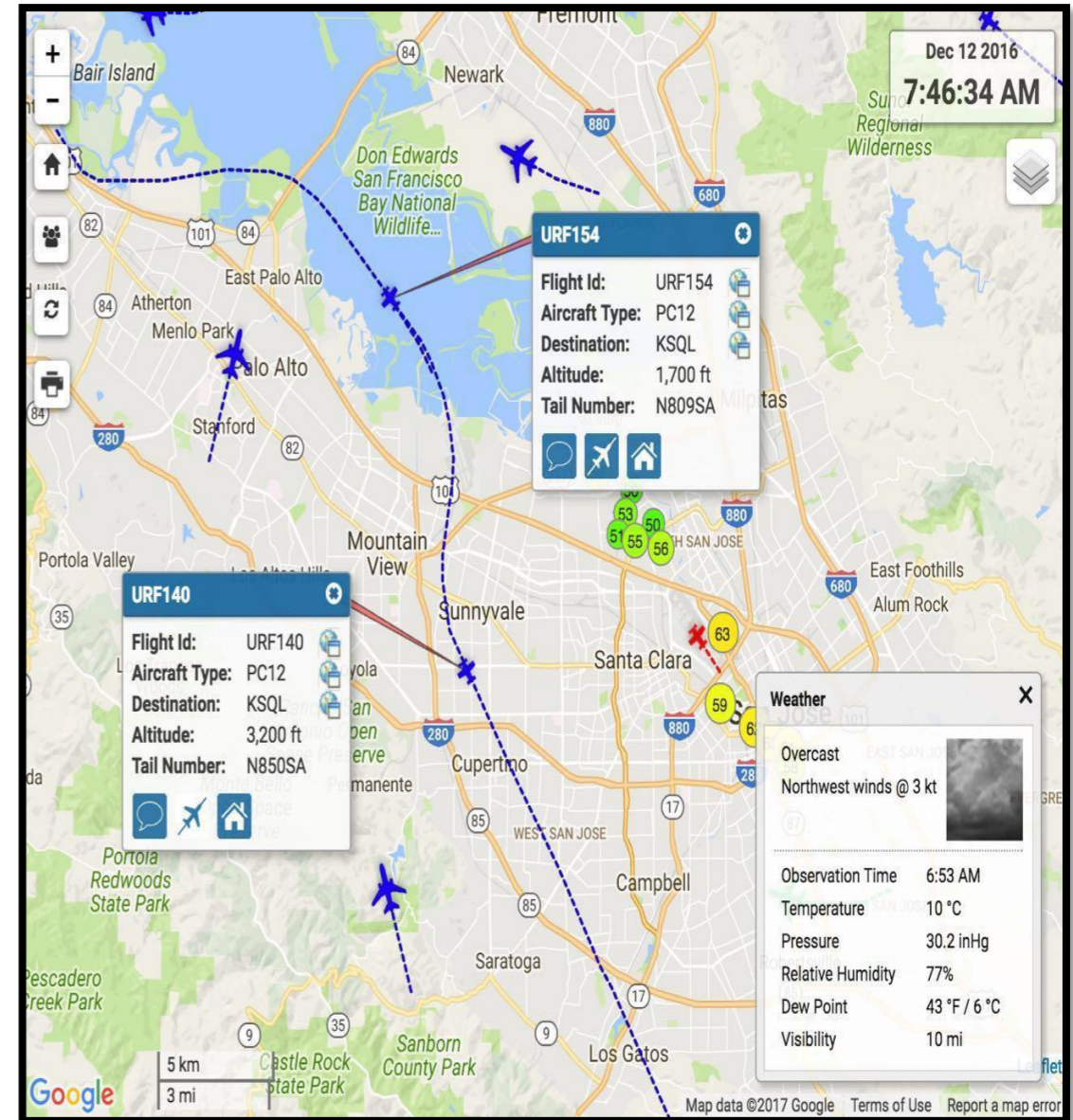
Surf Air: Overview

Surf Air GPS Approach



Impacts South Sunnyvale and Cupertino

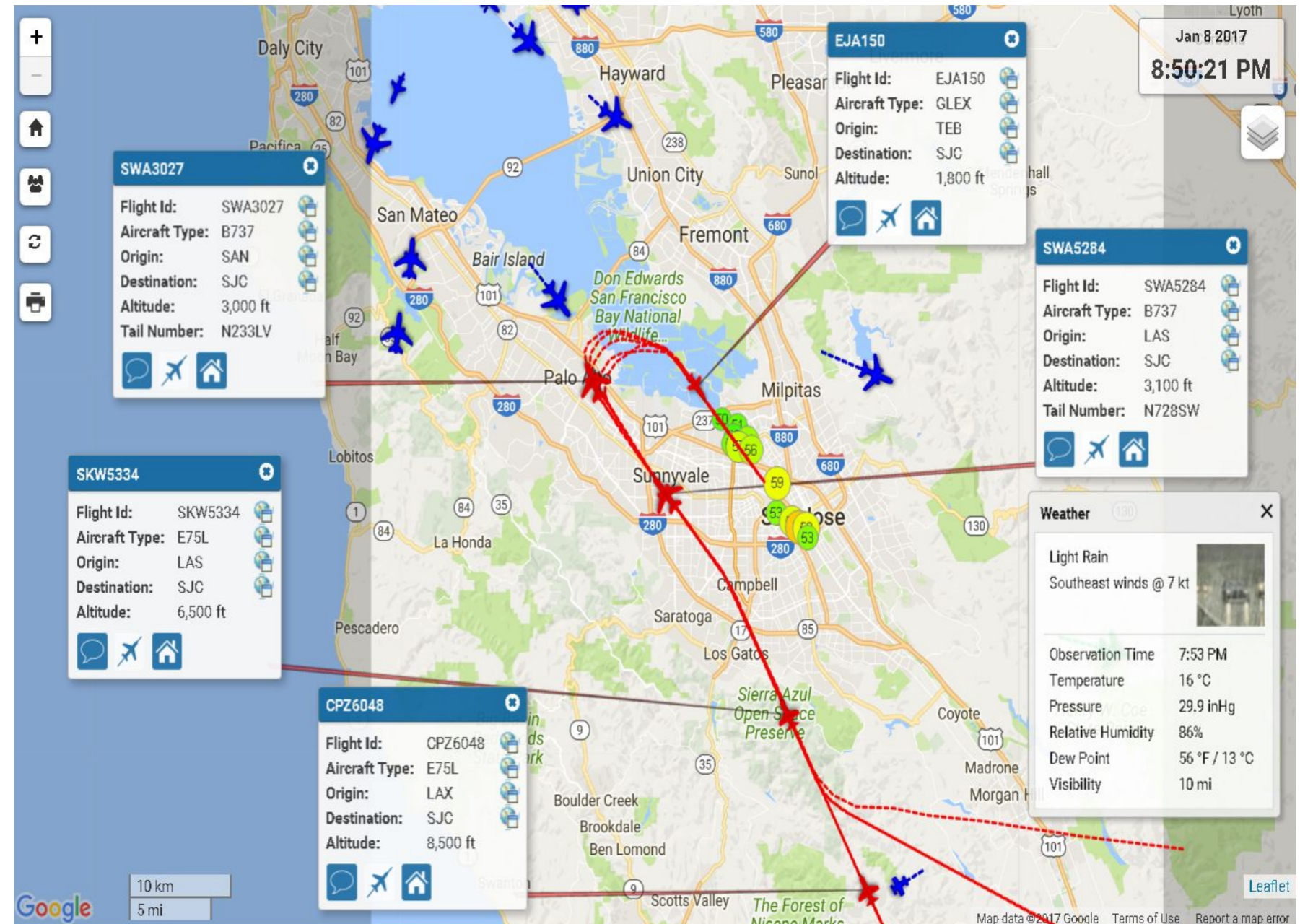
Surf Air Bayside Visual Approach



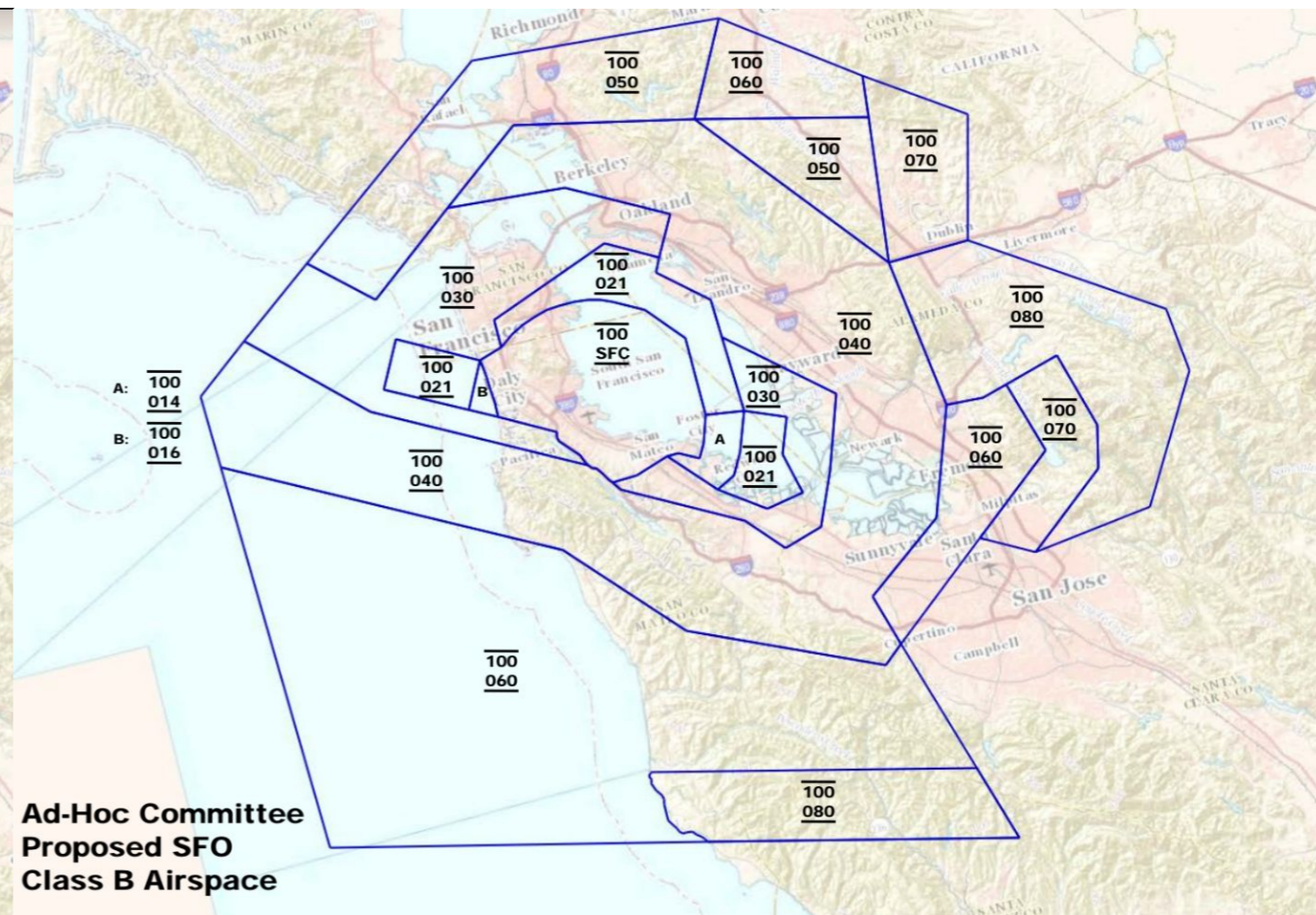
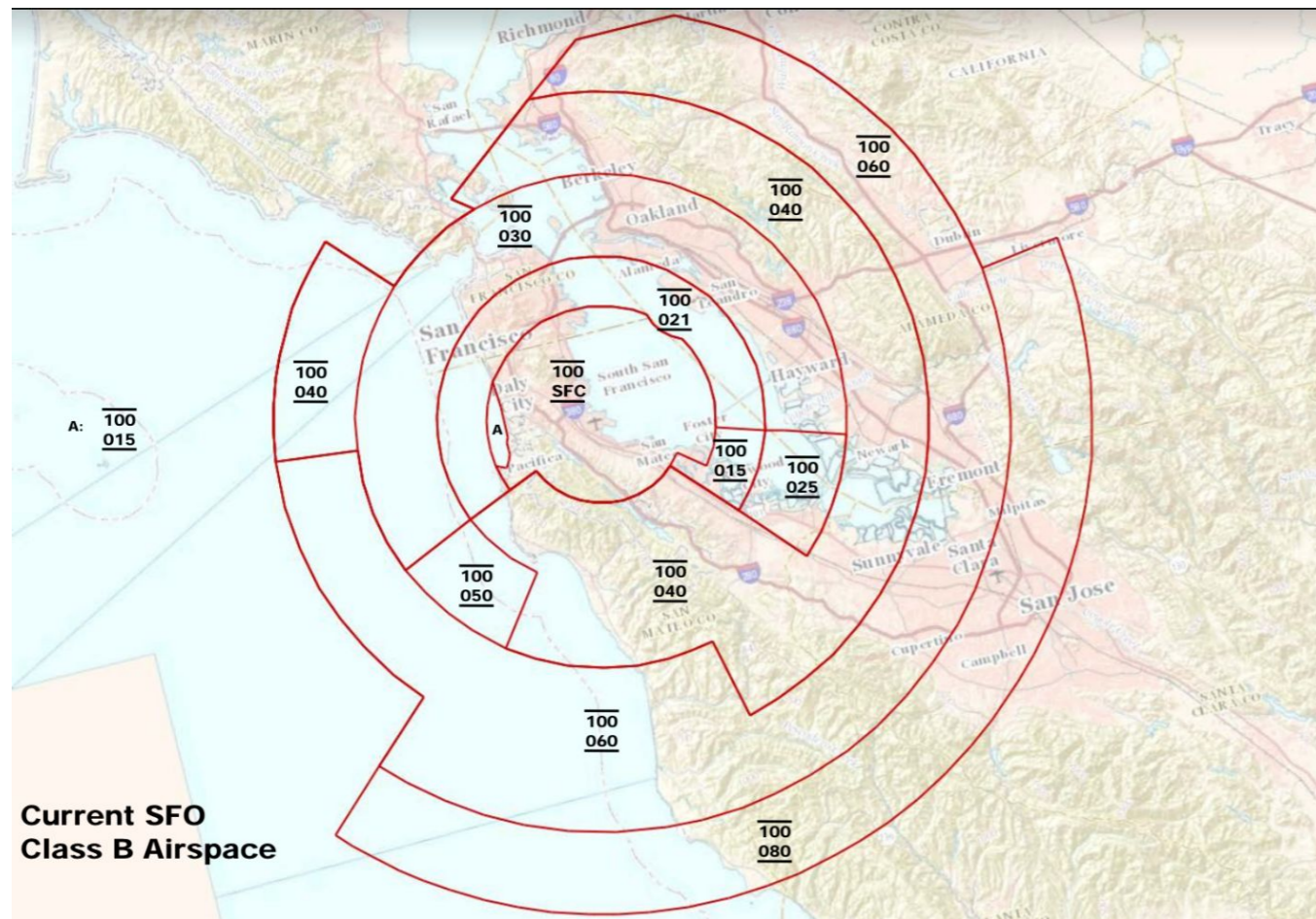
Impacts North Sunnyvale, South Sunnyvale and Cupertino

SJC proximity to Sunnyvale, Cupertino – (7 cities impacted)

- Perpendicular to SJC runways
- Very populated flight corridor



SFO Class B Airspace Modification



Proposed SFO airspace overlaid with hypothetical redesigned SFO arrival paths

